

# DRYCONN®

## WATERPROOF CONNECTORS

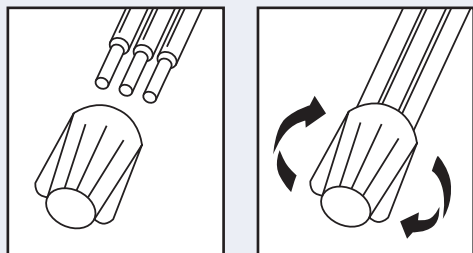
Filled Connectors for Outdoor/Irrigation Use



### INSTALLATION INSTRUCTIONS

**IMPORTANT:** Turn off power before installing or removing connector. Product to be used in accordance with local and national codes.

1. Strip wires 3/8" (9.5mm) except #16 and smaller. Strip wires 7/16" (11.1 mm).
2. Pre-twisting is unnecessary. Hold stripped wires together with ends of insulation even. Lead stranded wires slightly.
3. Align any frayed strands or conductors.
4. Firmly push wire into connector and screw connector clockwise onto wire until tight. Do not reuse.



### DryConn® Blue/Blue

Catalog #	Selling Unit
10222	Bag of 20
10241	Canister of 100
10260	Box of 6000

### PRODUCT SPECIFICATIONS & MEASUREMENTS

Max. Voltage: 600V max. building wire  
(1000V max. signs or luminaires)

Connector Size: 17/32" x 15/16"

Wire Type: Copper/Copper

Wire Range: Min #22/Max #12

Temperature Rating: 105°C (221°F)

Silicone Sealant: -45°F to 400°F

UL Designation: KYN

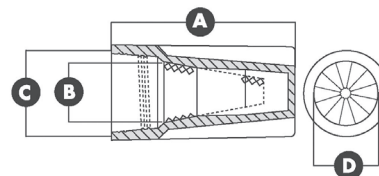
Measurements (Inches):

A - 0.932

B - 0.260

C - 0.539

D - 0.422



UL Listed as a Sealed Wire Connector. For use in dry, damp, wet locations below or above grade when used in an enclosure. For use in direct bury applications when operating at 30 volts or less.

Selected 600V Wire Combinations  
For use with solid and/or stranded combinations.

1-3 #12	2-5 #16	2 #12 w/1 #14
2-5 #18	1-4 #14	1 #10 w/1 #12
2 #12 w/1 #18	2 #14 w/1-3 #18	



MADE IN USA

**KING**  
INNOVATION®

50100-26 REV I 06/23

www.kinginnovation.com  
(P) 800.624.4320  
(F) 636.519.5410